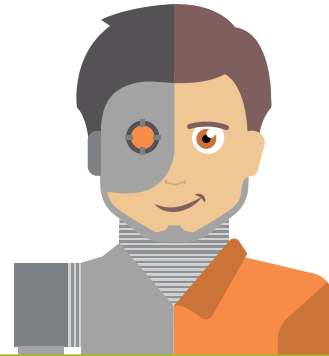


Computest

Hybrid vulnerability scanning by Marvin_

Meet Marvin_

Our hybrid service:
half tool, half test specialist



A security test as a snapshot is fine, but daily monitoring is better. After all, in between periodic pentests you are vulnerable. What's more, daily monitoring helps you remain compliant - for example, with your ISO 27001 certification or GDPR measures. Existing scanning tools can help, but the scan results are complex and typically generate additional work because the results need to be viewed and analysed.

Marvin_ offers the solution. This service is partly automated and partly manual and gives you continuous insight into the security of your infrastructure.

Why daily scans?

In addition to periodic pentests, many organisations are looking for a way to keep a permanent eye on their online environments and any new vulnerabilities. They want to do everything they can to guarantee the security and availability of their infrastructure. If the infrastructure is a crucial asset for an organisation, the potential impact of vulnerabilities is too great to take any risks.

Vulnerability scanning in brief

- > See the most urgent vulnerabilities in your infrastructure at a glance.
- > An automated basic check of the security of your online assets.
- > Time is spend on vulnerabilities, not on false positives.
- > Direct contact with a Computest Security Specialist means clients receive the right support so that problems can be resolved quickly.

Security in DevOps

Security should be part of the development process, as part of the automation of DevOps teams. This ensures continuity and visibility in a CI/CD pipeline. Marvin_ helps the DevOps team to continuously monitor the security of the infrastructure, even with continuous deployments.

No more false positives

Some organisations are already using an automated security scanning tool. Often, analysing and filtering the results takes up a lot of time, or they do not have the necessary expertise to do it in a proper and efficient manner.



How does Marvin_ work?

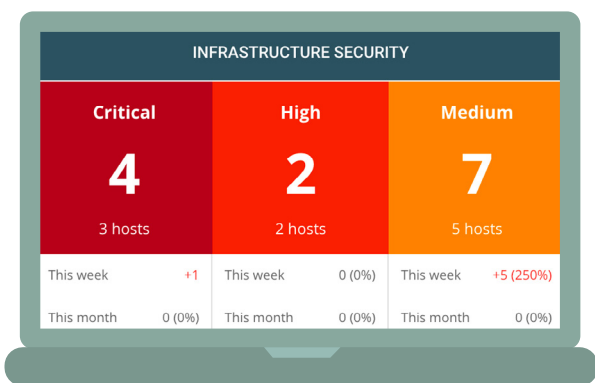


1. Daily security scans

The Marvin_ daily security scanner performs a daily security scan of the entire infrastructure, using existing and proven scanning tools.

2. Personal advice: analysis & validation

The results of the scan are verified every working day by an experienced Security Specialist who is familiar with the customer's environment and risks. The specialist decides which findings are relevant for the customer and marks them as such in the Marvin_ portal. You can use the chat functionality to communicate with the Security Specialist.



3. The Marvin_ portal

The portal displays the security status of the environment in a single dashboard. This includes:

- > the number of vulnerabilities judged to be relevant that were detected in the most recent scan;
- > the hosts with the most vulnerabilities that warrant ongoing attention;
- > the latest and most recently corrected vulnerabilities;
- > the comments for the vulnerabilities added by the client and by Computest Security Specialists;
- > trend report: how many vulnerabilities have been added or removed daily.

Marvin_ can do much more!

In addition to a daily security scan of your infrastructure, if required Marvin_ can also provide daily monitoring of the performance and availability of your web application(s).

Are response times exceeding the maximum values? Are there errors when opening web pages, or in click paths and transactions?

Marvin_ immediately sends you an alert so that you can take action quickly. Our Performance Specialists look at the results of the monitoring with you and are available for analysis and consultation.

Most commonly found vulnerabilities

1. Ports accidentally left open.
2. Software that needs security patches.
3. Defects in SSL/TLS configurations.

What does Marvin_ cost?

The exact price of **the hybrid vulnerability scanning service** depends on the size and complexity of the environment being scanned. Based on this, a fixed monthly fee is agreed. The service can be purchased in combination with **the hybrid Application Monitoring service (APM)**: the cost of the portal remains the same.

Want to know more? Or are you interested in a demo? Call 088 733 13 37 or send us an e-mail at marvin@computest.nl.

